

## surface-mounted overhead door closers

manufacturer

**GEZE**



**"TS 1000C" door closer**  
hydraulic, universal, dimensions:  
215x52x44 mm, for up to 60-kg doors  
and 1100 mm door leaf width, maximum  
opening angle 180°  
**Adjustment of:** closing speed, latching phase  
**STS1000C**

**OPTIONS:** standard arm\*, hold open arm\*,  
mounting plate\*

**FINISHES:** silver, brass, black, brown, white



**"TS 1500" door closer**  
hydraulic, universal, dimensions:  
180x50x39 mm, for up to 80-kg doors  
and 1100 mm door leaf width, maximum  
opening angle 180°  
**Adjustment of:** closing speed, closing force,  
latching phase  
**STS1500**

**OPTIONS:** standard arm\*, hold open arm\*,  
mounting plate\*

**FINISHES:** silver, brown, white



**"TS 1500G" door closer**  
hydraulic, universal, dimensions:  
180x50x39 mm, for up to 60-kg doors  
and 950 mm door leaf width, maximum  
opening angle 180°  
**Adjustment of:** closing speed, latching phase  
**STS1500G**

**OPTIONS:** guide rail\*, guide rail with hold  
open function\*, mounting plate\*

**FINISHES:** silver, brown, white



**"TS 2000V" door closer**  
hydraulic, universal, dimensions:  
226x60x47 mm, for up to 100-kg doors  
and 1250 mm door leaf width, maximum  
opening angle 180°  
**Adjustment of:** closing force, closing speed  
**STS2000** – standard  
**STS2000BC** – adjustable backcheck  
("wind-proof" mechanism)

**OPTIONS:** standard arm\*, hold open arm\*,  
hold open arm with an on/off switch for the  
hold-open mechanism\*, mounting plate\*

**FINISHES:** silver, brown, white



**"TS 2000V BC" door closer**  
with a guide rail, hydraulic, universal,  
dimensions: 226x60x47 mm, for up to 60-kg  
doors and 950 mm door leaf width, maximum  
opening angle 180°  
**Adjustment of:** closing force, closing speed,  
adjustable backcheck ("wind-proof"  
mechanism),  
**STS2000V-BC**

**OPTIONS:** guide rail\*, hold open arm\*,  
mounting plate\*

**FINISHES:** silver, brown, white



**"TS 3000V" door closer**  
with a guide rail, hydraulic, universal,  
dimensions: 223x60x47 mm, for up to 80-kg  
doors and 1100 mm door leaf width, maximum  
opening angle 180°  
**Adjustment of:** closing force, closing speed  
**STS3000**

**OPTIONS:** guide rail\*, hold open arm\*,  
mounting plate\*

**FINISHES:** silver, brown, white



**"TS 4000" door closer**  
hydraulic, universal, dimensions:  
287x60x47 mm, for up to 120-kg doors  
and 1400 mm door leaf width, maximum  
opening angle 180°  
**Adjustment of:** closing force (optical  
indicator), closing speed (thermo constant),  
latching phase, backcheck ("wind-proof"  
mechanism)  
**STS4000** – standard version  
**STS4000S** – with delayed action  
**STS4000E** – with electrohydraulic  
hold-open  
**STS4000EFS** – with electrohydraulic  
hold-open, "freeswing" function  
**STS4000R** – with electrohydraulic  
hold-open, integrated smoke detector  
**STS4000RFS** – with electrohydraulic  
hold-open, integrated smoke detector  
**STS4000IS** – with a closing sequence  
control valve, mechanical releasing element  
**STS4000E-IS** – STS4000IS  
– with electrohydraulic hold-open function  
on both sides  
**STS4000R-IS** – STS4000E-IS –  
with an integrated smoke detector

**OPTIONS:** standard arm\*, hold open arm\*,  
hold open arm with an on/off switch for the  
hold-open mechanism\*, mounting plate\*

**FINISHES:** silver, brown, white



**"TS 4000A" door closer**  
hydraulic, universal, dimensions:  
287x60x47 mm, for up to 160-kg doors  
and 1600 mm door leaf width, maximum  
opening angle 180°  
**Adjustment of:** closing force (optical  
indicator), closing speed (thermo constant),  
latching phase, backcheck ("wind-proof"  
mechanism)  
**STS4000/A** – standard version  
**STS4000S/A** – with delayed action  
**STS4000E/A** – with electrohydraulic  
hold-open  
**STS4000EFS/A** – with electrohydraulic  
hold-open  
**STS4000R/A** – with electrohydraulic  
hold-open, integrated smoke detector  
**STS4000RFS/A** – with electrohydraulic  
hold-open, integrated smoke detector  
**STS4000IS/A** – with a closing sequence  
control valve, mechanical releasing element  
**STS4000E-IS/A** – STS4000IS  
– with electrohydraulic hold-open function  
on both sides  
**STS4000R-IS/A** – STS4000E-IS  
– with an integrated smoke detector

**OPTIONS:** standard arm\*, hold open arm\*,  
hold open arm with an on/off switch for the  
hold-open mechanism\*, mounting plate\*

**FINISHES:** silver, brown, white

\* – special order



– burglary resistance certificate



– security class



**"TS5000" door closer**  
with a guide rail, hydraulic, universal, dimensions: 287 x 60 x 47 mm for up to 120-kg doors and 1400 mm door leaf width, maximum opening angle 180°  
**Adjustment of:** closing force (optical indicator), closing speed (thermo constant), latching phase, backcheck ("wind-proof" mechanism)  
**ST55000** – standard version  
**ST55000L** – for fitting to opposite hinge side of the door  
**ST55000S** – with delayed action  
**ST55000E** – with electrohydraulic hold-open in the guide rail  
**ST55000R** – with electrohydraulic hold-open in the guide rail, integrated smoke detector  
**ST55000IS** – with a closing sequence control mechanism in the guide rail  
**ST55000E-IS** – ST55000IS with electrohydraulic hold-open on both sides  
**ST55000R-IS** – ST55000E-IS with a smoke switch  
**ST55000EFS** – with electrohydraulic hold-open

**OPTIONS:** guide rail\*, guide rail with hold open function\*, mounting plate\*  
**FINISHES:** silver, brown, white



**"GROOM 101" door closer**  
hydraulic, universal, dimensions: 180 x 44 x 65 mm, for up to 60-kg doors and 950 mm door leaf width, maximum opening angle 180°  
**Adjustment of:** closing speed, latching phase  
**101311**

**OPTIONS:** standard arm\*  
**FINISHES:** silver, brown, white



**"GROOM 150" door closer**  
hydraulic, universal, dimensions: 220 x 44 x 43.5 mm, for up to 80-kg doors and 1100 mm door leaf width, maximum opening angle 180°  
**Adjustment of:** closing force, closing speed (thermo constant), latching phase  
**TSGROOM**

**OPTIONS:** standard arm, hold open arm\*, for all types of doors including fire-proof and smoke-proof  
**FINISHES:** silver, brown, white



**"GROOM 200" door closer**  
hydraulic, universal, dimensions: 210 x 40 x 60 mm, for up to 100-kg doors and 1250 mm door leaf width, maximum opening angle 180°  
**Adjustment of:** closing force, closing speed (thermo constant), backcheck ("wind-proof" mechanism)  
**GR200BR**


**OPTIONS:** standard arm\*, hold open arm\*, fire-proof and smoke-proof door installation\*  
**FINISHES:** silver, brown, white

**manufacturer**  
**DORMA**




**"TS 68" door closer**  
hydraulic, universal, 220 x 45 x 54 mm, for up to 80-kg doors and 1100 mm door leaf width, maximum opening angle 180°  
**Adjustment of:** closing speed  
**TS68**

**OPTIONS:** standard arm\*, hold open arm\*  
**FINISHES:** silver, brown, white



**"TS 71" door closer**  
hydraulic, universal, 232 x 45 x 68 mm, for up to 80-kg doors and 1100 mm door leaf width, maximum opening angle 180°  
**Adjustment of:** closing speed  
**TS71**

**OPTIONS:** standard arm\*, hold open arm\*  
**FINISHES:** silver, brown, white



**"TS 83" door closer**  
hydraulic, universal, 293 x 48 x 60 mm, for up to 140-kg doors and 1600 mm door leaf width, maximum opening angle 180°  
**Adjustment of:** closing speed, closing force, backcheck ("wind-proof" mechanism)  
**TS83**

**OPTIONS:** standard arm\*, flat-form arm\*, hold open arm\*  
**FINISHES:** silver, brown, white

**manufacturer**  
**ECO SCHULTE**




**"TS-10" door closer**  
hydraulic, universal, dimensions: 180 x 42 x 65 mm, for up to 80-kg doors and 1100 mm door leaf width  
**Adjustment of:** closing force, closing speed, latching phase, backcheck ("wind-proof" mechanism)  
**3374**

**OPTIONS:** hold-open arm\*  
**FINISHES:** silver, brown, white



**"TS-11" door closer**  
hydraulic, universal, dimensions: 207 x 55 x 45 mm, for up to 100-kg doors and 1250 mm door leaf width  
**Adjustment of:** closing force, closing speed, latching phase  
**4609**

**OPTIONS:** hold-open arm\*  
**FINISHES:** silver, brown, white

**manufacturer**  
**YALE**



**"Y300 Series" door closer**  
hydraulic, universal, dimensions:  
178x52x65 mm, for up to 60-kg doors  
and 1100 mm door leaf width, maximum  
opening angle 180°, durability tested up to  
100 000 cycles  
**Adjustment of:** closing force, closing speed  
**Y322**

**OPTIONS:** standard arm\*, hold open arm\*,  
guide rail\*  
**FINISHES:** silver



**"500 Series" door closer**  
hydraulic, universal, dimensions:  
178x52x65 mm, for up to 80-kg doors  
and 1100 mm door leaf width, maximum  
opening angle 180°, durability tested up to  
100 000 cycles  
**Adjustment of:** closing force, closing speed  
**MP522**

**OPTIONS:** standard arm\*, hold open arm\*,  
guide rail\*  
**FINISHES:** silver, brown, white



**"1000V Series" door closer**  
hydraulic, universal, dimensions:  
210x42x56 mm, for up to 80-kg doors  
and 1100 mm door leaf width, maximum  
opening angle 180°, durability tested up to  
100 000 cycles  
**Adjustment of:** closing force, closing speed  
adjusted with valves  
**1012V** – standard arm with hold-open  
**1022V** – standard arm  
**1032V** – parallel arm

**FINISHES:** silver



**"2000 Series" door closer**  
hydraulic, universal, dimensions:  
210x48x62 mm, for up to 80-kg doors  
and 1100 mm door leaf width, maximum  
opening angle 180°, certified for use  
with fire-proof doors, durability tested up to  
500 000 cycles  
**Adjustment of:** closing force, closing speed  
adjusted with valves  
**2012** – standard arm with hold-open  
**2022** – standard arm  
**2032** – standard arm with a possibility  
of mounting as a parallel arm

**OPTIONS:** with a liquid for low temperatures  
(max. -40°C)\*  
**FINISHES:** silver

**manufacturer**  
**OTHER MANUFACTURERS**



**BRANO "R12A/14" door closer**  
hydraulic, universal, dimensions:  
172x143x105 mm, for up to 80-kg doors  
and 1050 mm door leaf width, maximum  
opening angle 90°  
**Adjustment of:** closing force, closing speed,  
latching phase  
**SW01-18**

**FINISHES:** silver



**TELESCO "Delta Flexi" door closer**  
hydraulic, universal, dimensions:  
219x54x48 mm, for up to 80-kg doors  
and 1100 mm door leaf width, maximum  
opening angle 180°, certified for use  
with fire-proof and smoke-proof doors,  
CE certificate  
**Adjustment of:** closing force, closing speed,  
latching phase  
**A 1759 S** – standard version  
**A 1759 R** – version with an adjustable arm  
blocking system

**FINISHES:** silver, brown, white



**TELESCO "Unik Combi" door closer**  
hydraulic, universal, dimensions:  
221x61x50 mm, for up to 100-kg doors  
and 1250 mm door leaf width, maximum  
opening angle 180°, certified for use  
with fire-proof and smoke-proof doors  
**Adjustment of:** closing force, closing speed,  
latching phase  
**A 2459 S** – wersja standard  
**A 2459 R** – wersja z regulowaną blokadą  
ramienia

**FINISHES:** silver, brown, white



**"Typ 701" door closer IMPORT**  
hydraulic, universal, dimensions:  
178x42x64 mm, for up to 45-kg doors  
and 1000 mm door leaf width, maximum  
opening angle 180°  
**Adjustment of:** closing speed, latching phase  
**2234**

**FINISHES:** silver



**"Typ 702" door closer IMPORT**  
hydraulic, universal, dimensions:  
204x43x72 mm, for up to 65-kg doors  
and 1100 mm door leaf width, maximum  
opening angle 180°  
**Adjustment of:** closing speed, latching phase  
**3717**

FINISHES: silver



**"Typ 703" door closer IMPORT**  
hydraulic, universal, dimensions:  
204x43x74 mm, for up to 85-kg doors  
and 1100 mm door leaf width, maximum  
opening angle 180°  
**Adjustment of:** closing speed, latching phase  
**3718**

FINISHES: silver



**"Typ 704" door closer IMPORT**  
hydraulic, universal, dimensions:  
248x45x72 mm, for 80-120kg doors  
and 1100 mm door leaf width, maximum  
opening angle 180°  
**Adjustment of:** closing speed, latching phase  
**3719**

FINISHES: silver



**"M602" door closer INVEKO**  
spring-loaded with hydraulic backcheck,  
universal, dimensions: 150x36x56 mm,  
for up to 65-kg doors and 900 mm door leaf  
width  
**M602**

FINISHES: silver



**"B87" door closer INVEKO**  
spring-loaded with hydraulic backcheck,  
universal, dimensions: 177x41x65 mm,  
for up to 45-kg doors and 800 mm door leaf  
width  
**B87**

FINISHES: silver



**"B88" door closer INVEKO**  
spring-loaded with hydraulic backcheck,  
universal, dimensions: 185x45x68 mm,  
for up to 65-kg doors and 900 mm door leaf  
width  
**B88**

FINISHES: silver



**"B89" door closer INVEKO**  
spring-loaded with hydraulic backcheck,  
universal, dimensions: 185x45x68 mm,  
for up to 85-kg doors and 1000 mm door leaf  
width  
**B89**

FINISHES: silver



**"B94" door closer INVEKO**  
spring-loaded with hydraulic backcheck, univer-  
sal, dimensions: 222x45x71 mm, for up to  
120-kg doors and 1100 mm door leaf width  
**B94**

FINISHES: silver



**Metalplast Częstochowa  
door closer**  
spring-loaded  
**5090208** – 100 mm, 225 mm arm,  
for up to 40-kg doors and 850 mm door leaf  
width  
**5090211** – 150 mm, 428 mm arm,  
for up to 80-kg doors and 1000 mm door leaf  
width

FINISHES: white

**spare parts**



**GEZE door closer arm**  
**RZ1** – TS 1000/1500, standard  
**RZ2** – TS 2000/4000, standard  
**RZB1** – TS 1000/1500 with permanent  
hold-open  
**RZB2** – TS 2000/4000 with permanent  
hold-open  
**RZB3** – TS 2000/4000 with hold-open  
and a switch for turning hold-open on/off

FINISHES: silver, brown, white



**GEZE door closer guide rail**  
**RS1** – TS 3000/5000, standard  
**RS2** – TS 3000/5000, for fitting to opposite  
hinge side of the door  
**RSB** – TS 3000/5000, hold-open guide rail

FINISHES: silver, brown, white

## integrated/concealed door closers

manufacturer  
**GEZE**

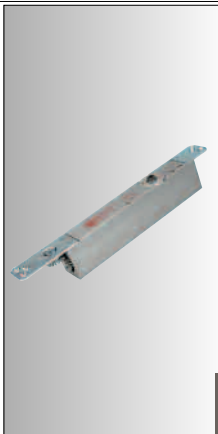


### "BOXER 2-4" door closer

hydraulic, universal, dimensions: 440x32x45 mm, for up to 130-kg doors and 1100 mm door leaf width, minimal door leaf width 40 mm  
**Adjustment of:** closing speed, latching phase, backcheck ("wind-proof" mechanism)  
**099728**

**OPTIONS:** with standard arm\*, with mechanical hold-open arm\* with electromechanical hold-open arm\*

**FINISHES:** silver



### "BOXER 2-6" door closer

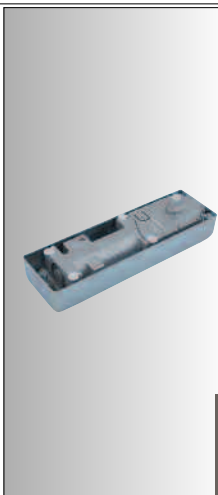
hydraulic, universal, dimensions: 440x40x54 mm, for up to 180kg doors and 1400 mm door leaf width, minimal door leaf width 50 mm, "wind-proof" mechanism (backcheck), RS Z5 smoke detector\*  
**Adjustment of:** closing speed, latching phase, backcheck  
**099735**

**OPTIONS:** with standard arm\*, with mechanical hold-open arm\* with electromechanical hold-open arm\*

**FINISHES:** silver

## floor-mounted door closers

manufacturer  
**GEZE**



### "STOP TS 500N EN3" door closer

for single and double action doors, hydraulic, universal, dimensions: 278x82x42 mm, for up to 100-kg doors and 950 mm door leaf width

**Adjustment of:** closing speed (thermo constant), latching phase, backcheck ("wind-proof" mechanism)  
**103984**

**OPTIONS:** hold-open (85° or 90° or 105°)\*, arm for double action doors\*, arm for single action doors\*, upper hinge\*, filling mass\*

**FINISHES:** silver zinc coating  
**COVER:** stainless steel\*, brass\*, lacquered aluminium (brown)



**"STOP TS 500 NV" door closer**  
for single and double action doors, hydraulic, universal, dimensions: 278x82x42 mm, for up to 150-kg doors and 1100 mm door leaf width

**Adjustment of:** closing speed (thermo constant), latching phase, backcheck ("wind-proof" mechanism)  
**103974**

**OPTIONS:** hold-open (85° or 90° or 105°)\*, arm for double action doors\*, arm for single action doors\*, upper hinge\*, filling mass\*

**FINISHES:** silver zinc coating  
**COVER:** stainless steel\*, brass\*, lacquered aluminium (brown)\*



### "STOP TS 550" door closer

for single and double action doors, hydraulic, universal, dimensions: 328x82x54 mm, for up to 250-kg doors and 1250 mm door leaf width

**Adjustment of:** closing force, closing speed (thermo constant), backcheck ("wind-proof" mechanism), hold-open with an on/off switch  
**057887**

**OPTIONS:** arm for double action doors\*, arm for single action doors\*, upper hinge\*, filling mass\*, delayed action\*

**FINISHES:** silver zinc coating  
**COVER:** stainless steel\*, brass\*, lacquered aluminium (brown)\*



### "STOP TS 550F" door closer

for single and double action doors, hydraulic, dimensions: 328x82x54 mm, for up to 250-kg doors and 1400 mm door leaf width, adjustable closing speed (thermo constant), "wind-proof" mechanism (backcheck)

**Adjustment of:** closing force, closing speed (thermo constant), backcheck ("wind-proof" mechanism), hold-open angle  
**050972** – left hand  
**050973** – right hand

**OPTIONS:** arm for double action doors\*, arm for single action doors\*, upper hinge\*, filling mass\*, delayed action\*

**FINISHES:** silver zinc coating  
**COVER:** stainless steel\*, brass\*, lacquered aluminium (brown)\*